

ŠVESTKA

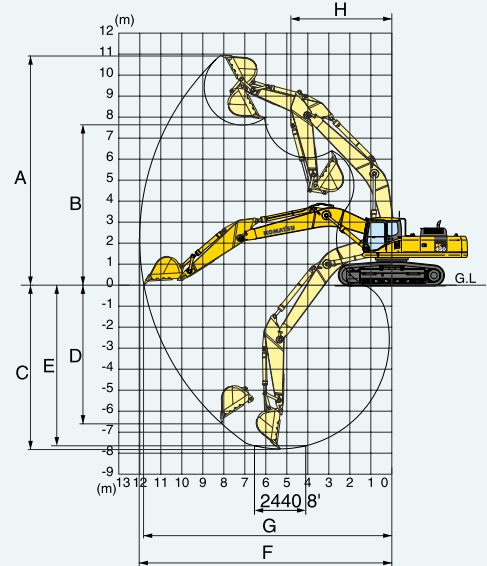
DEMOLICE • ZEMNÍ PRÁCE • NADROZMĚRNÁ PŘEPRAVA • MOBILNÍ JEŘÁBY • DOPRAVA • RECYKLACE



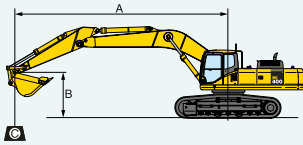
WORKING RANGE

	Arm length	3380 mm 11'1"
A	Max. digging height	10925 mm 35'10"
B	Max. dumping height	7625 mm 25' 0"
C	Max. digging depth	7790 mm 25' 7"
D	Max. vertical wall digging depth	6600 mm 21'8"
E	Max. digging depth of cut for 8' level	7650 mm 25'1"
F	Max. digging reach	12005 mm 39'5"
G	Max. digging reach at ground level	11800 mm 38'9"
H	Min. swing radius	4805 mm 15'9"
SAE rating	Bucket digging force at power max.	243 kN/24800 kgf/54,670 lb
	Arm crowd force at power max	225 kN/22900 kgf/50,490 lb
ISO rating	Bucket digging force at power max.	278 kN/28300 kgf/62,390 lb
	Arm crowd force at power max.	233 kN/23800 kgf/52,470 lb

KOMATSU® PC450LC-7



LIFTING CAPACITY WITH LIFTING MODE



- A: Reach from swing center
- B: Bucket hook height
- C: Lifting capacity
- Cf: Rating over front
- Cs: Rating over side
- ⊙: Rating at maximum reach

PC450-7		Arm: 3380 mm 11'1"		Bucket: 1.9 m³ 2.49 yd³ SAE heaped		Shoe: 600 mm 23.6" triple grouser							
B	A	MAX		9.0m 29'		7.5 m 24'		6.0 m 19'		4.5 m 14'		3.0 m 9'	
		Cf	Cs	Cf	Cs	Cf	Cs	Cf	Cs	Cf	Cs	Cf	Cs
7.5m 24'		*5550 kg *12100 lb	*5550 kg *12100 lb	*6600 kg *14500 lb	5900 kg 12900 lb								
6.0m 19'		*5550 kg *12100 lb	4750 kg 10400 lb	*8800 kg *19300 lb	5850 kg 12900 lb	*9600 kg *21100 lb	8400 kg 18500 lb						
4.5m 14'		*5750 kg *12600 lb	4200 kg 9200 lb	8750 kg 19300 lb	5700 kg 12500 lb	*10650 kg *23400 lb	8050 kg 17600 lb	*12800 kg *28100 lb	11850 kg 26000 lb				
3.0m 9'		*6100 kg *13400 lb	3900 kg 8500 lb	8500 kg 18700 lb	5450 kg 12000 lb	11700 kg 25700 lb	7600 kg 16600 lb	*14800 kg *32600 lb	10950 kg 24100 lb	*20800 kg *45800 lb	17200 kg 37800 lb		
1.5m 4'		6200 kg 13600 lb	3800 kg 8300 lb	8250 kg 18100 lb	5250 kg 11400 lb	11200 kg 24600 lb	7150 kg 15700 lb	16150 kg 35500 lb	10200 kg 22400 lb	*23400 kg *51500 lb	15700 kg 34600 lb		
0.0m 0'		6350 kg 13900 lb	3900 kg 8500 lb	8050 kg 17700 lb	5050 kg 11000 lb	10850 kg 23800 lb	6850 kg 15000 lb	15600 kg 34300 lb	9650 kg 21200 lb	*23050 kg *50700 lb	15050 kg 33100 lb		
-1.5m -4'		6800 kg 14900 lb	4200 kg 9100 lb	7950 kg 17400 lb	4950 kg 10800 lb	10650 kg 23400 lb	6650 kg 14600 lb	15300 kg 33700 lb	9450 kg 20700 lb	*23000 kg *50700 lb	14900 kg 32800 lb	*15050 kg *33100 lb	*15050 kg *33100 lb
-3.0m -9'		7700 kg 16900 lb	4800 kg 10500 lb	7950 kg 17500 lb	4950 kg 10900 lb	10650 kg 23400 lb	6650 kg 14500 lb	15300 kg 33700 lb	9450 kg 20700 lb	*21050 kg *46400 lb	15050 kg 33100 lb	*22200 kg *48800 lb	*22200 kg *48800 lb
-4.5m -14'		*8900 kg *19600 lb	6000 kg 13100 lb			*10450 kg *23000 lb	6800 kg 14900 lb	*13800 kg *30400 lb	9650 kg 21200 lb	*17850 kg *39300 lb	15450 kg 34000 lb	*23300 kg *51200 lb	*23300 kg *51200 lb
-6.0m -19'		*8000 kg *17600 lb	*8000 kg *17600 lb					*9350 kg *20500 lb	*9350 kg *20500 lb	*12650 kg *27900 lb	*12650 kg *27900 lb		

PC450LC-7		Arm: 3380 mm 11'1"		Bucket: 1.9 m³ 2.49 yd³ SAE heaped		Shoe: 600 mm 23.6" triple grouser							
B	A	MAX		9.0m 29'		7.5 m 24'		6.0 m 19'		4.5 m 14'		3.0 m 9'	
		Cf	Cs	Cf	Cs	Cf	Cs	Cf	Cs	Cf	Cs	Cf	Cs
7.5 m 24'		*5550 kg *12100 lb	*5550 kg *12100 lb	*6600 kg *14500 lb	6000 kg 13200 lb								
6.0m 19'		*5550 kg *12100 lb	4850 kg 10600 lb	*8800 kg *19300 lb	6000 kg 13100 lb	*9600 kg *21100 lb	8550 kg 18800 lb						
4.5m 14'		*5750 kg *12600 lb	4300 kg 9400 lb	*9300 kg *20400 lb	5800 kg 12700 lb	*10650 kg *23400 lb	8200 kg 17900 lb	*12800 kg *28100 lb	12000 kg 26400 lb				
3.0m 9'		*6100 kg *13400 lb	4000 kg 8700 lb	9650 kg 21200 lb	5550 kg 12200 lb	*11750 kg *25800 lb	7700 kg 16900 lb	*14800 kg *32600 lb	11150 kg 24500 lb	*20800 kg *45800 lb	17450 kg 38400 lb		
1.5m 4'		*6700 kg *14700 lb	3900 kg 8500 lb	9400 kg 20700 lb	5350 kg 11700 lb	*12700 kg *27900 lb	7300 kg 16000 lb	*16450 kg *36100 lb	10350 kg 22800 lb	*23400 kg *51500 lb	16000 kg 35100 lb		
0.0m 0'		7250 kg 15900 lb	4000 kg 8700 lb	9200 kg 20200 lb	5150 kg 11300 lb	12400 kg 27300 lb	6950 kg 15300 lb	*17250 kg *37900 lb	9850 kg 21600 lb	*23050 kg *50700 lb	15350 kg 33700 lb		
-1.5m -4'		7750 kg 17100 lb	4300 kg 9300 lb	9100 kg 19900 lb	5050 kg 11000 lb	12200 kg 26800 lb	6800 kg 14900 lb	*17100 kg *37600 lb	9600 kg 21100 lb	*23000 kg *50700 lb	15200 kg 33400 lb	*15050 kg *33100 lb	*15050 kg *33100 lb
-3.0m -9'		8800 kg 19300 lb	4900 kg 10700 lb	9100 kg 20000 lb	5050 kg 11100 lb	12200 kg 26800 lb	6750 kg 14800 lb	*16050 kg *35300 lb	9600 kg 21100 lb	*21050 kg *46400 lb	15350 kg 33700 lb	*22200 kg *48800 lb	*22200 kg *48800 lb
-4.5m -14'		*8900 kg *19600 lb	6100 kg 13400 lb			*10450 kg *23000 lb	6950 kg 15200 lb	*13800 kg *30400 lb	9800 kg 21600 lb	*17850 kg *39300 lb	15700 kg 34600 lb	*23300 kg *51200 lb	*23300 kg *51200 lb
-6.0m -19'		*8000 kg *17600 lb	*8000 kg *17600 lb					*9350 kg *20500 lb	*9350 kg *20500 lb	*12650 kg *27900 lb	*12650 kg *27900 lb		

*Load is limited by hydraulic capacity rather than tipping. Ratings are based on SAE Standard No. J1097. Rated loads do not exceed 87% of hydraulic lift capacity or 75% of tipping load.