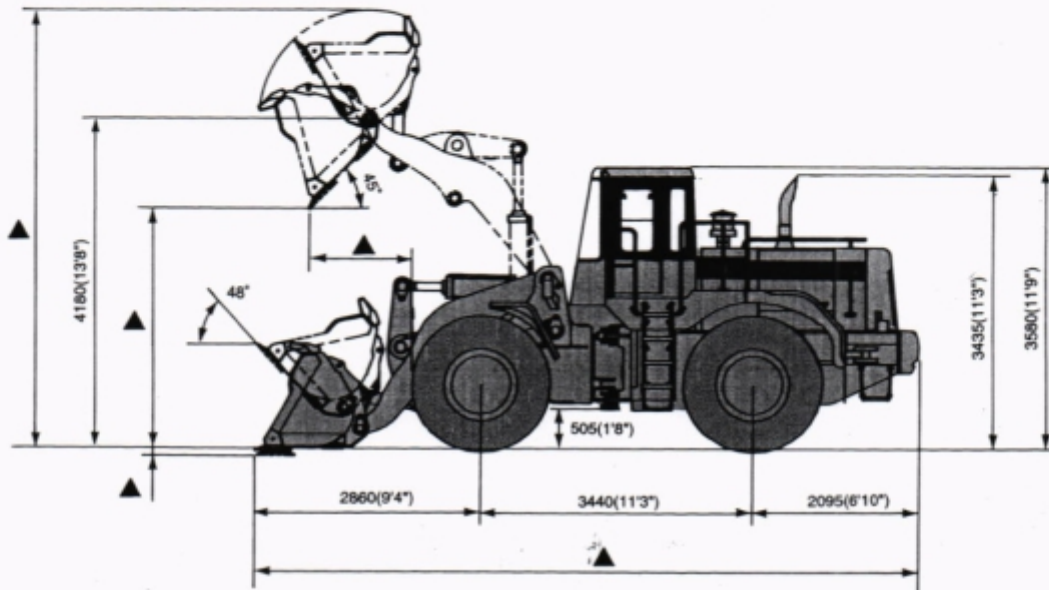


ŠVESTKA

DEMOLICE • ZEMNÍ PRÁCE • NADROZMĚRNÁ PŘEPRAVA • MOBILNÍ JEŘÁBY • DOPRAVA • RECYKLACE

Hyundai HL770



▲ Dimensions vary with bucket. Refer to operating specifications chart on page 8.

Tire size	Tread	Width over tires	Change in reach vertical dimensions	Change in reach
23.5-25 L2	2300 mm (7'7")	2910 mm (9'7")	-67 mm (-2.6")	+62 mm (+2.4")
23.5-25 L3	2300 mm (7'7")	2910 mm (9'7")	-60 mm (-2.4")	+55 mm (+2.2")
26.5-25 L3	2300 mm (7'7")	2975 mm (9'9")	0 mm (0)	0 mm (0)
26.5R25XHA★L3	2300 mm (7'7")	2963 mm (9'9")	+5 mm (+0.2")	-5 mm (-0.2")

Material densities (loose)

MATERIAL	kg/m ³	lb/yd ³	
BASALT	1,960	3,300	
BAUXITE, KAOLIN	1,420	2,400	
CALICHE	1,250	2,100	
CINDES	990	1,000	
CLAY	NATURAL BED	1,660	2,800
	DRY	1,480	2,500
	WET	1,660	2,800
CLAY & GRAVEL	DRY	1,420	2,400
	WET	1,540	2,600
COAL - BROKEN	ANTHRACITE, BROKEN	1,100	1,850
	BITUMINOUS, BROKEN	830	1,400
DECOMPOSED ROCK	75% ROCK, 25% EARTH	1,960	3,300
	50% ROCK, 50% EARTH	1,720	2,900
	25% ROCK, 75% EARTH	1,570	2,650
EARTH	DRY, PACKED	1,510	2,550
	WET, EXCAVATED	1,600	2,700
	LOAM	1,250	2,100
GRANITE, BROKEN	BROKEN	1,660	2,800
	CRUSHED	1,810	3,050
GYPSUM	CRUSHED	1,600	2,700
	PITRUN	1,930	3,250
	DRY	1,510	2,550
GRAVEL	DRY, 13 - 50mm	1,690	2,850
	WET, 13 - 50mm	2,020	3,400
	BROKEN	1,540	2,600
LIMESTONE	BROKEN	1,540	2,600
	CRUSHED	1,540	2,600
MAGNETITE, IRON ORE	2,790	4,700	
PHOSPHATE ROCK	1,280	2,160	
PYRITE, IRON ORE	2,580	4,350	
SAND	DRY, LOOSE	1,420	2,400
	DAMP	1,650	2,850
	WET	1,840	3,100
SAND & CLAY, LOOSE	1,600	2,700	
SAND & GRAVEL	DRY	1,720	2,900
	WET	2,020	3,400
SAND STONE	1,510	2,550	
SHALE	1,250	2,100	
SLAG, BROKEN	1,750	2,950	
STONE, CRUSHED	1,600	2,700	
TOP SOIL	950	1,600	

BUCKET SELECTION GUIDE

